



# TE/SLD

## Quality Control at its finest

THE MOST ADVANCED **TEXTILE DIGITAL METAL DETECTOR**

### FEATURES

- Ultra high Sensitivity to all magnetic and non-magnetic metals, including stainless steel
- Stand-alone and separate control unit version [RC] available
- Compact and robust construction
- Wide Detection Speed range, from 1 up to 600 m/min
- Complete selection range: 35 models available
- Easy installation and setting
- IP65 [RC version] high degree of protection

High Immunity  
to environmental  
Interference



Examples of  
detectable metal  
fragments



[www.maydokimloaiceia.vn](http://www.maydokimloaiceia.vn)



Hotline: 0907 686 889 - Email: [hoanglongtechnology@gmail.com](mailto:hoanglongtechnology@gmail.com)

CEIA reserves the right to make changes, at any moment and without notice, to the models, their accessories and options, to the prices and conditions of sale

The **TE/SLD Digital Metal Detectors** are the ideal means of protection for production lines against accidental damage caused by fragments of metal which can enter the manufacturing process along with the material.



**FEATURES**

- Fully Digital Programming
- Internal data logging with data and timestamp for Quality Control
- Password protected with separate user and engineer level
- Bluetooth communication for setting and maintenance through external PC
- Autolearn function for automatic setting of the maximum sensitivity in dry and wet conditions
- Built-in function for automatic measurement of the external interferences

The **TE/SLD Metal Detector** belongs to the family of micro-sensitive bar metal detectors whose high quality and reliability are universally recognized by leading world manufacturers of industrial machinery.

The Textile Metal Detector signals the presence of magnetic and non-magnetic metal masses, both on the exterior and in the interior of the product, and stops the machine.

Sensitivity can be adjusted digitally depending on the size of the metal fragments which must be intercepted, and a special detection memory function also reveals the passage of several consecutive contaminants.

Digital signal analysis allows the user to optimize detection with respect to the product's speed of passage and the metals to be intercepted, thus obtaining the best possible immunity to any external interference.

By avoiding damage to the production line and the consequent interruptions to the manufacturing process, the **TE/SLD Metal Detector** returns the value of the investment at the first detection event.

**MODERN, RUGGED AND USER FRIENDLY PROGRAMMING**

- Industrial rate design
- Rapid data entry
- Easy to read, high-contrast graphic OLED display
- Rugged, antivandalic stainless steel keyboard

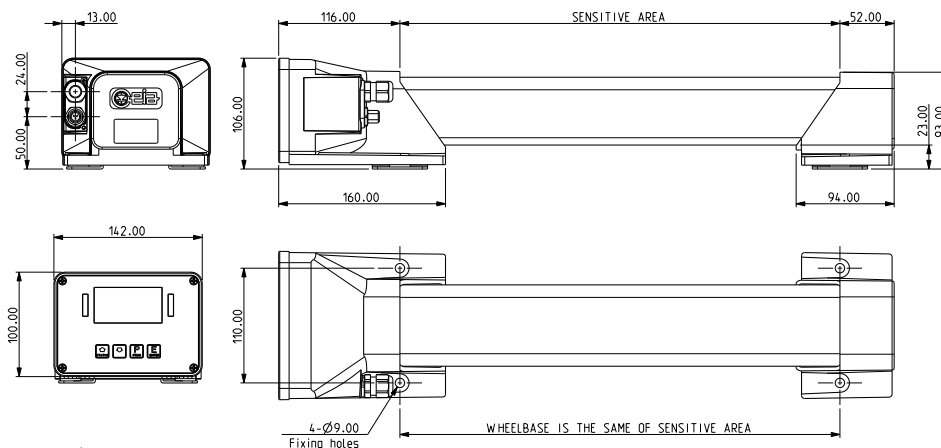


Display of the status of the metal detector



Display screen in case of detection

**OVERALL DIMENSIONS**



Other widths available on request

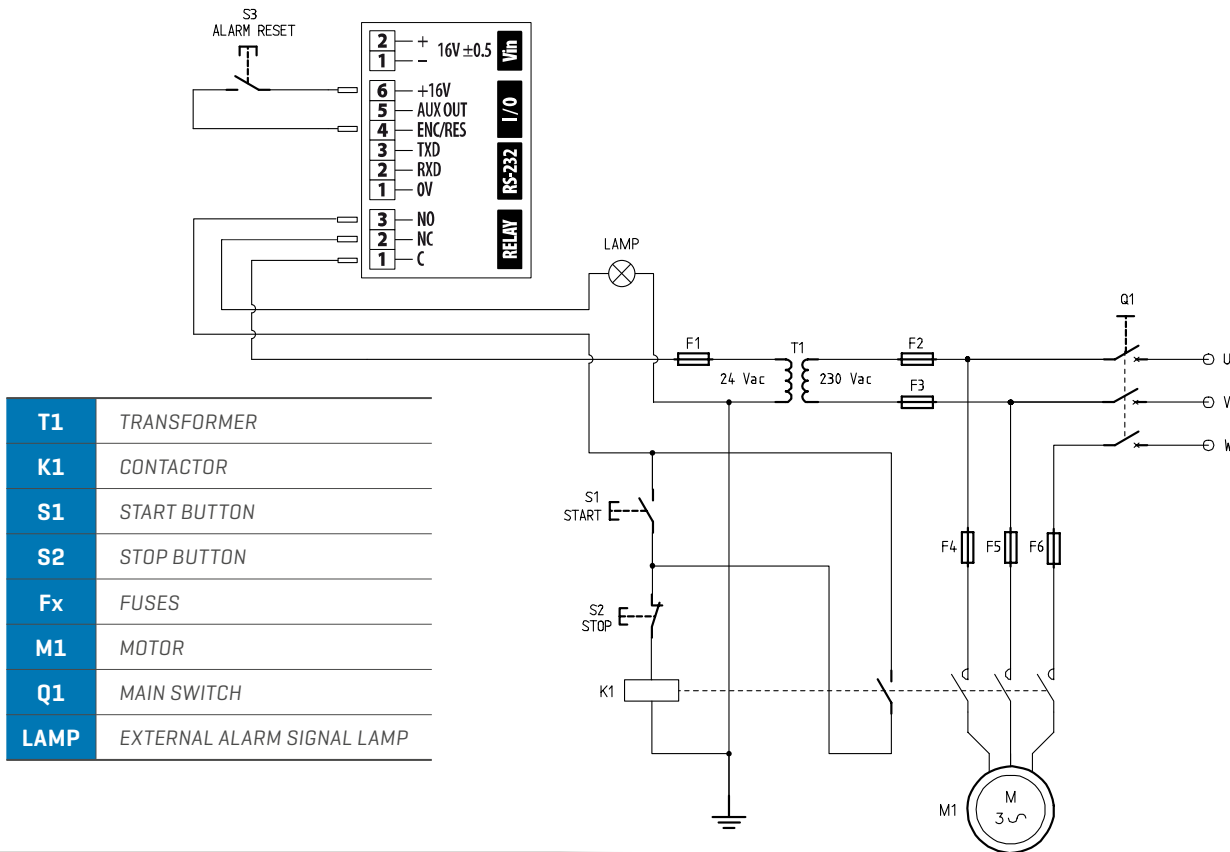
MODELS	SENSITIVE AREA
TE-SLD 1300	1300 mm
TE-SLD 1500	1500 mm
TE-SLD 1700	1700 mm
TE-SLD 1900	1900 mm
TE-SLD 2100	2100 mm
TE-SLD 2300	2300 mm
TE-SLD 2500	2500 mm
TE-SLD 2700	2700 mm
TE-SLD 2900	2900 mm
TE-SLD 3100	3100 mm
TE-SLD 3300	3300 mm
TE-SLD 3500	3500 mm
TE-SLD 3700	3700 mm
TE-SLD 3900	3900 mm
TE-SLD 4100	4100 mm
TE-SLD 4500	4500 mm
TE-SLD 5300	5300 mm

Digital signal analysis allows the user to optimize detection with respect to the product's speed of passage and the metals to be intercepted, thus obtaining the best possible immunity to any external interference.

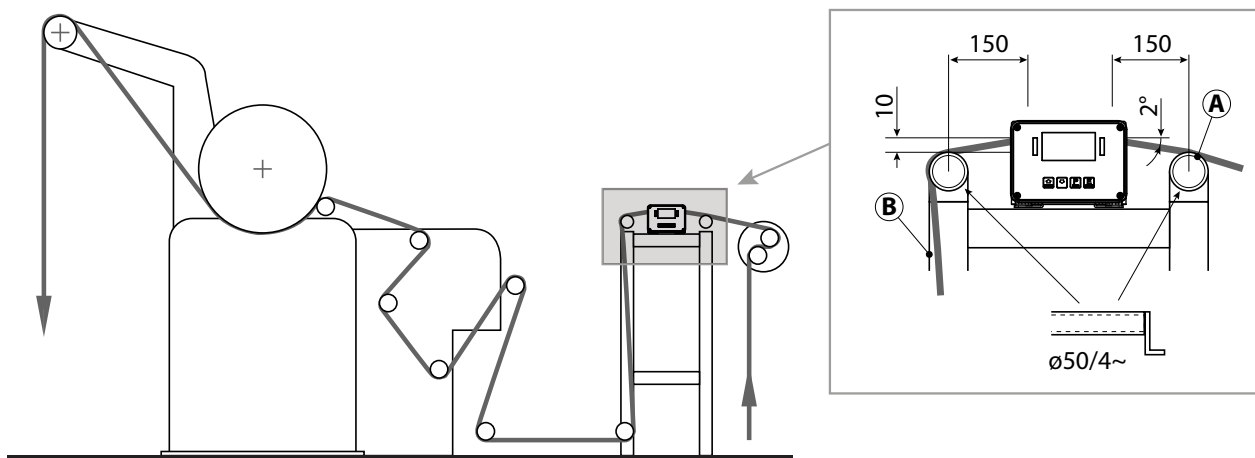
The TE/SLD Metal Detector is tested to conform to Electrical Safety and Electromagnetic Compatibility standards.



EXAMPLE OF DIAGRAM TO STOP THE LINE IN THE CASE OF METAL ALARM



TYPICAL TE/SLD APPLICATION SCHEMATIC



Mounting on a support frame at the cloth entry-point of a calender: A, steel tube; B, steel draw piece



## SPECIFICATIONS

### GENERAL FEATURES

Adjustable sensitivity with wide dynamic range (0-299)
Interception speed programmable according to its application
Digital programming with OLED graphic display
Visual alarm signal
Built-in self-diagnosis system
Permanent settings memory without battery back-up

### STRUCTURES

Protection degree	TE/SLD: IP40
	TE/SLD-RC: IP65

### INPUTS/OUTPUTS

Voltage	100-240 V~ monophase - 50-60 Hz
Current	1,5 A max

### PROGRAMMING

Type	Local: through built-in keyboard	
	Remote: Bluetooth	
Data capabilities	Internal memory	1000 events
		20 products

### SIGNALLING

Audible	Internal buzzer	
Visual	Graphic display with bar-graph indication	
	Bright indicators	RED: Alarm or fault
	on Control Panel	GREEN: Line present

### SECURITY AND SAFETY

Programming access	2 access levels: Operator and Supervisor
Galvanic isolation of line voltage	
Low operating voltage	No danger for the operator
In compliance with international standards of safety and radio interference	

### CONTROL INPUTS

Connection for	Alarm reset or Encoder input
Bluetooth interface	Incorporated

### OUTPUTS

1 programmable relay	Alarm relay
----------------------	-------------

### ENVIRONMENTAL DATA

Temperature	Operating	-10 to +50 °C
	Storage	-25 to +60 °C
Relative humidity	5 to 90 %, without condensation	

### CERTIFICATION AND CONFORMITY

EN61010-1 Safety requirements for electrical equipment for measurement, control and laboratory use - Part 1: General requirements
EN60204-1 Safety of machinery - Electrical equipment of machines - Part 1: General requirements
EN61000-6-2 Electromagnetic Compatibility (EMC) - Part 6-2: Generic standards - Emission standard for industrial environments
EN61000-6-4 Electromagnetic Compatibility (EMC) - Part 6-4: Generic standards - Immunity for industrial environments
European Directive 2004/108/CE

### REMOTE CONTROL UNIT



View of the remote control unit version [TE/SLD-RC]

### EXAMPLES OF INSTALLATION



Lateral TE/SLD installation



Updown TE/SLD installation



**HOANG LONG TECHNOLOGY**  
Always for your product quality

HOANG LONG TECHNOLOGY CO., LTD.  
468 Le Hong Phong Str, District 10, Ho Chi Minh City  
Tel: 028 38 398 999 ; Hotline: 0907 686 889

REPRESENTATIVE OFFICE IN DA NANG  
172 Ngo Huy Dien Str, Hoa Xuan, Cam Le District, Da Nang City

Email: [hoanglongtechnology@gmail.com](mailto:hoanglongtechnology@gmail.com)  
Web: [congnghehoanglong.com](http://congnghehoanglong.com)  
or: [maydokimloaiceia.vn](http://maydokimloaiceia.vn) or [maydokimloai.vn](http://maydokimloai.vn)

[www.maydokimloaiceia.vn](http://www.maydokimloaiceia.vn)

CEIA reserves the right to make changes, at any moment and without notice, to the models, their accessories and options, to the prices and conditions of sale

